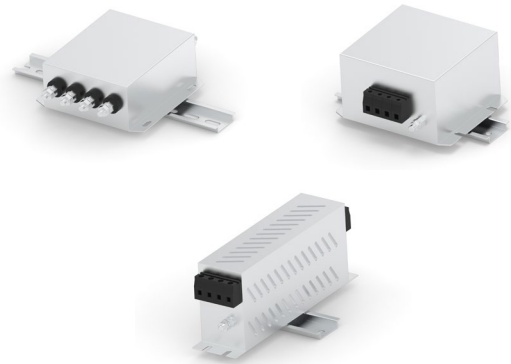


INTRODUCING

CORCOM 3-PHASE HIGH PERFORMANCE DIN RAIL MOUNTED EMI FILTER

- Chassis / DIN rail mountable
(clips onto customer supplied DIN rail)
- Suppresses EMI noise



TE Connectivity (TE)'s Corcom 3-phase DIN rail mounted EMI filters portfolio consists of six variants (1A to 100A ratings) which include fully potted and bookshelf (BS) types, with performance ratings of standard, high, and very high.

These filters are used in many different applications such as industrial machinery, factory automation equipment, servo drives, variable frequency drives, frequency inverters & converters, robotics, renewable & alternative energy, and EV charging stations.

KEY BENEFITS

- Chassis / DIN rail mountable
(clips onto customer supplied DIN rail)
- Suppresses EMI noise
- Does not require mounting screws
- Standard attenuation performance
- Light weight, compact and easy to install

APPLICATIONS

- Industrial machinery
- Factory automation equipment
- Servo drives
- Variable frequency drives
- Frequency inverters / converters
- Robotics
- Renewable / alternative energy
- EV charging stations

LEARN MORE

[Corcom 3-Phase Power Filters](#)

[Corcom EMI & RFI Filters](#)

[Corcom EMI / RFI Filter Selector Chart](#)

[Corcom 3-Phase Power Filters Parts List](#)

[KEB Product Listing Page](#)

[KEM Product Listing Page](#)

[KEP Product Listing Page](#)

[KEH-BS Product Listing Page](#)

[KEV-BS Product Listing Page](#)

[KEB Series Data Sheet](#)

[KEM Series Data Sheet](#)

[KEP Series Data Sheet](#)

[KEH-BS Series Data Sheet](#)

[KEM-BS Series Data Sheet](#)

[KEP-BS Series Data Sheet](#)

[KEV-BS Series Data Sheet](#)

ENHANCEMENT TO OUR EXISTING 3 PHASE PRODUCT RANGE

KEB and KES series – standard performance

- Single stage, 3 wire delta (KEB) and 4 Wire WYE (KES), potted version only
- Spade of stud terminals, 1A to 60A, 440V and 520V

KEM and KEP series – high Performance

- Single stage, 3 wire delta (KEM) and 4 wire WYE (KEP), potted and bookshelf version
- Shockproof terminals, 6A to 50A (potted) & 7A to 100A (bookshelf), 440V and 520V

KEH and KEV series – very high performance

- Single stage, 3 wire delta (KEH) and 4 wire WYE (KEV), bookshelf version only
- Shockproof terminals, 7A to 100A , 440V and 520V