

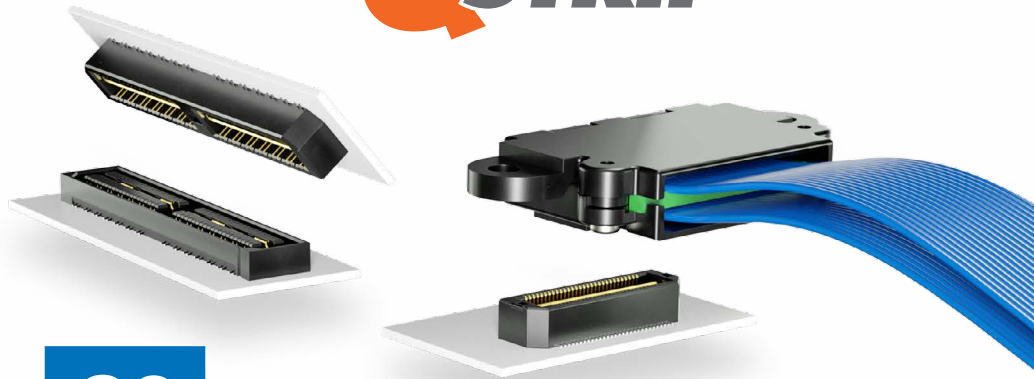


# LOW-PROFILE GROUND PLANE

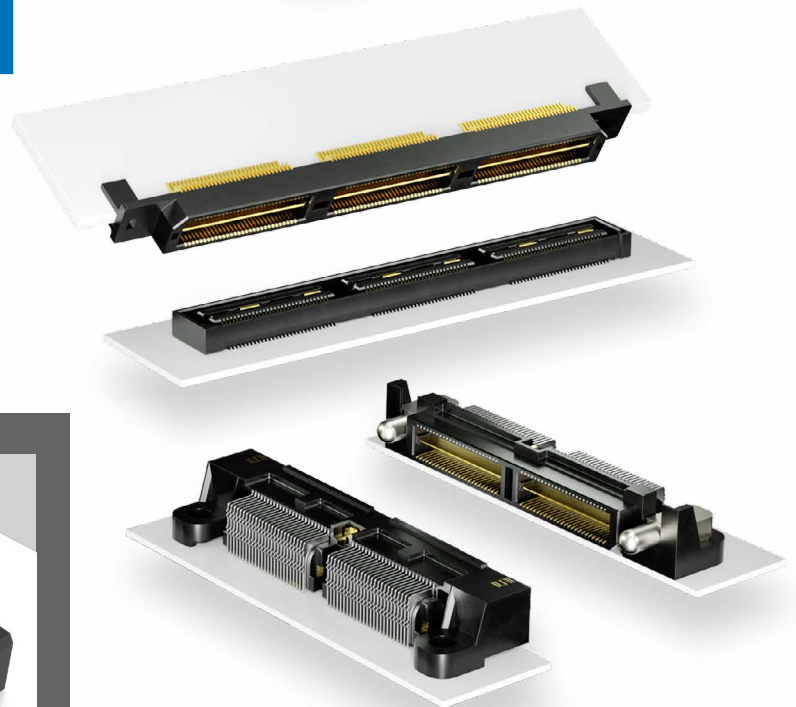
## Q STRIP® HIGH-SPEED INTERCONNECTS



- Choice of pitch: 0.50 mm, 0.635 mm and 0.80 mm
- Integral ground plane rated to 25 A
- 5 – 25 mm stack heights
- Reliable signal integrity performance
- Mating/alignment "friendly" Blade and Beam contact system
- 40 – 180 signal pins / 28 – 120 differential pairs
- Right-angle and edge mount available
- 38 AWG micro coax and 30 AWG twinax cable assemblies rated to 14 Gbps
- Rugged guide post, weld tab and solder pin options
- Compatible with UMPT/UMPS micro power system for power/signal flexibility

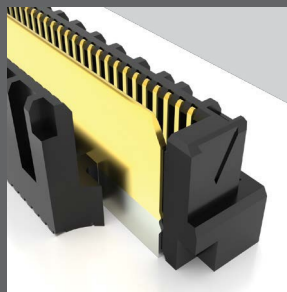


28  
Gbps



### INTEGRAL GROUND PLANE

- Surface mount ground plane between two signal rows improves electrical performance
- Significantly reduces row-to-row crosstalk
- Reduces coupling between pins within a row



### SYSTEM

- **QTH/QSH** – 0.50 mm Pitch Header & Socket
- **QTS/QSS** – 0.635 mm Pitch Header & Socket
- **QTE/QSE** – 0.80 mm Pitch Header & Socket
- **HQCD/EQCD** – 0.50 mm & 0.80 mm Pitch Micro Coax Cable Assemblies
- **HQDP/EQDP** – 0.50 mm & 0.80 mm Pitch Twinax Cable Assemblies

For more High-Speed Board-to-Board Solutions, please visit [samtec.com/mezzanine](http://samtec.com/mezzanine)